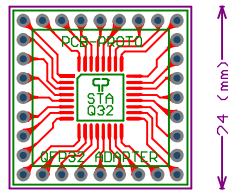


PCB-PROTO/QFP32 MULTIADAPTER/CODE: STA-Q32

FR4 1.55mm, CU 35um, 2 LAYER, PLATED HOLES, 2 SOLDER MASK, 1 SILK SCREEN
Top layer QFP32, 0.8mm pitch, 7mm body
Bottom layer QFP32, 0.5mm pitch, 5mm body
2.54mm grid through holes adapter, 1mm holes diameter

← 24 (mm) →



PCB-PROTO\QFP32 MULTIPADAPTER\CODE:STA-Q32

2.54mm grid through holes, 1mm holes diameter,
Bottom layer QFP32, 0.5mm pitch, 5mm body
Top layer QFP32, 0.8mm pitch, 7mm body
FR4 1.58mm, CU 35um, 2 LAYER, PLATED HOLES, 2 SOLDER MASK, 1 SILK SCREEN

