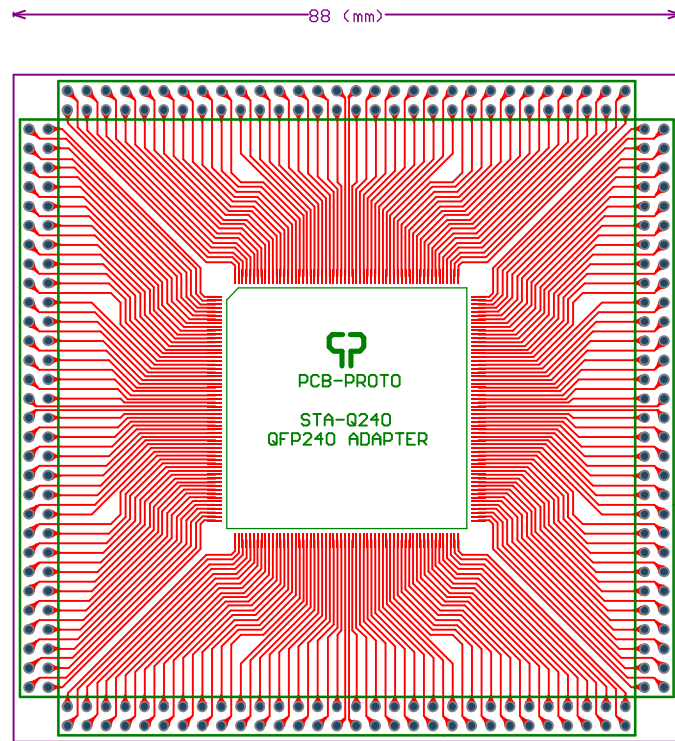


# PCB-PROTO/QFP240 MULTIADAPTER/ CODE: STA-Q240

FR4 1.55mm, CU 35um, 2 LAYER, PLATED HOLES, 2 SOLDER MASK, 1 SILK SCREEN  
Top layer QFP240, 0.5mm pitch, 32mm body  
2.54mm grid through holes adapter, 1mm holes diameter



# PCB-PROTO\QFP240 MULLIADAPTER\CODE:STA-Q240

2.84mm grid through holes adapter, 1mm holes diameter  
Top layer QFP240, 0.8mm pitch, 32mm body  
FR4 1.58mm, CU 35um, 2 LAYER, PLATED HOLES, 2 SOLDER MASK, 1 SILK SCREEN

