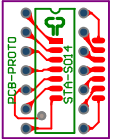


PCB-PROTO/S014 SSOP14 ADAPTER/CODE: STA-S014

FR4 1.55mm, CU 35um, 2 LAYER, PLATED HOLES, 2 SOLDER MASK, 1 SILK SCREEN
Top layer S014, 1.27mm pitch, 3.9mm body
Bottom layer SSOP14, 0.65mm pitch, 5.3mm body
Adapter: Standard 14 X 300mils dimensions, 1mm holes diameter

←14 (mm)→



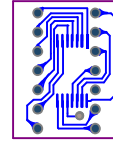
↑18 (mm)↓

PCB-PROTO\2014 220P14 ADAPTER\CODE:STA-2014

Adapter: standard 14 X 300mil dimensions, 1mm holes diameter
Bottom layer 220P14, 0.8mm pitch, 5.3mm body
Top layer 2014, 1.27mm pitch, 3.9mm body

FR4 1.8mm, CU 35um, 2 LAYER, PLATED HOLES, 2 SOLDER MASK, 1 SILK SCREEN

14 (mm)



31 (mm)